



Lighting the way to  
environmental sustainability

GENERAL LIGHTING





Our promise today.

Our **commitment** to the **future.**

It's a commitment that goes beyond  
our products. Sustainability—*meeting  
our needs today without compromising*

*the resources future generations  
will need*—touches everything we  
do as a company.



Dear Customers and Colleagues,

It is exciting to share with you the first Environmental Sustainability report from OSRAM SYLVANIA's General Lighting Division.

Environmental stewardship is a fundamental part of our business ethic. I am proud of the way we integrate environmental responsibility into every area of our product design, production, distribution and sales practices so that we are using fewer natural resources, saving energy for our customers, reducing power plant emissions, and recycling lamps and other materials to avoid millions of pounds of waste from landfills.

We will continue our pledge to lessen environmental impacts—for our customers, for our communities, and for our employees. As you'll see in these pages, our commitment to the environment goes well beyond our products.

Henny Peters

Executive Vice President and General Manager, General Lighting Division

For all of us at OSRAM SYLVANIA, active protection of the world's limited resources is built into the way we do business. As one of the world's largest lighting manufacturers, we recognize that an intelligent, conscientious approach to the environment is not just the right thing to do. It's the only thing to do.

Respect for the environment. At every level of the company, we've put an organization in place to support our environmental goals, backed by a systematic environmental management system that continues to raise our standards of performance.

**Environmental stewardship across the entire product life cycle**

In over 100 years of operation, we've learned how to meet our customers' lighting needs while maintaining a sustainable approach to product design, development, manufacturing and distribution.

Environmental sustainability is a continuous initiative that spans the entire life cycle of OSRAM SYLVANIA products, including:

- Design and implementation of environmental practices and management systems for our manufacturing facilities
- Selection of environmentally preferable raw materials and minimization of hazardous materials and waste
- Development and application of energy-efficient products and systems
- Optimized packaging and transportation
- Proper disposal of spent lamps and other materials through a comprehensive recycling program



**Compact fluorescent lamps deliver everyday sustainability**

The design of the standard incandescent bulbs lighting your home or office has changed very little from Thomas Edison's first light bulb in 1879. Only 10 percent of the energy used by these standard bulbs contributes to light; the other 90 percent is wasted as heat.

Our ENERGY STAR®-qualified DULUX® EL compact fluorescent lamps use up to 75% less energy than a standard incandescent bulb—and last up to 10 times longer! So over the life of just one DULUX EL lamp, our customers save considerably on replacement costs, and they also save about \$25\* on their utility bills.

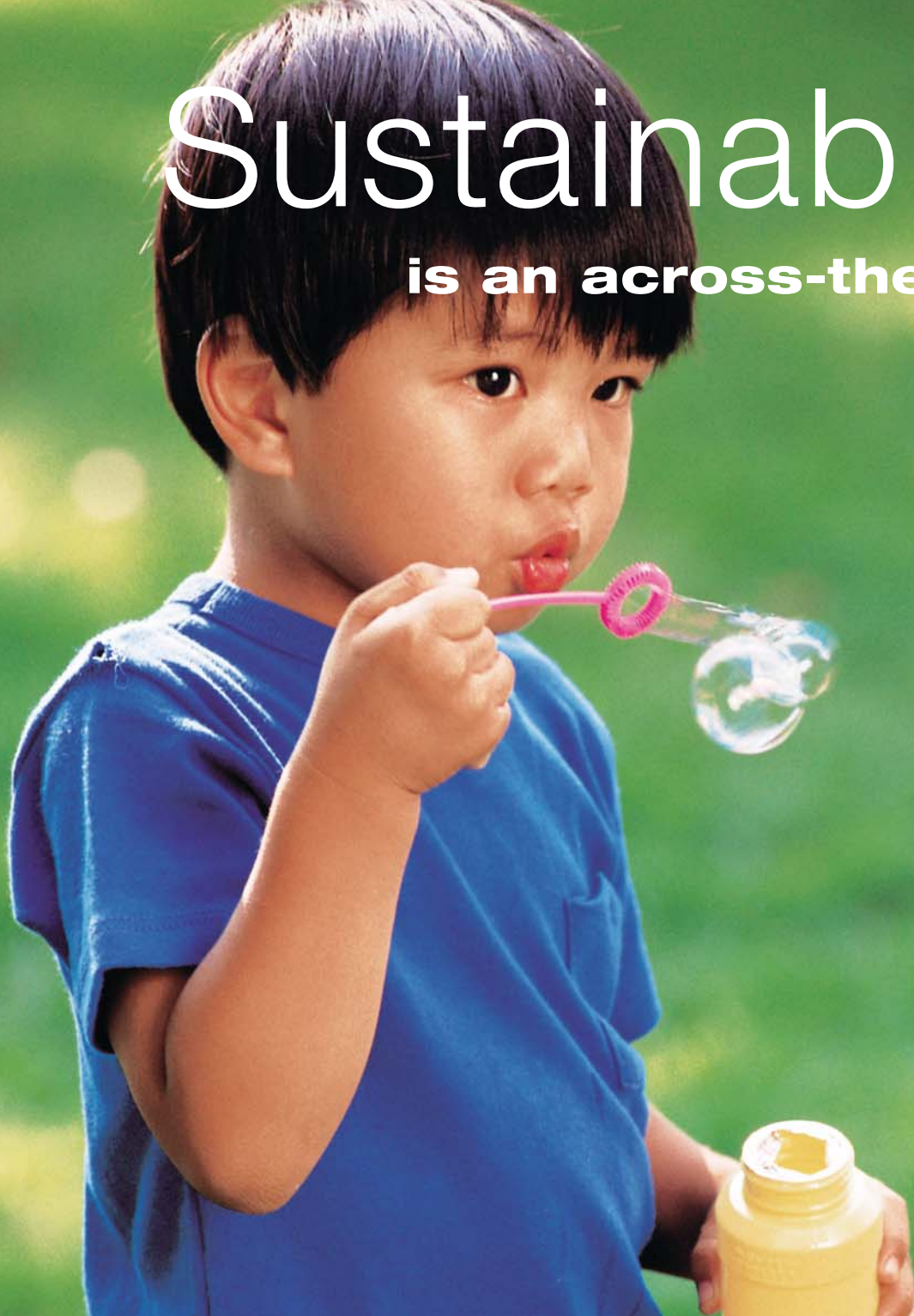
Last year alone, sales of SYLVANIA compact fluorescent lamps through utility-sponsored rebate programs helped consumers save almost \$11 million on their electricity bills, and reduced pollution equivalent to what is generated by about 14,000 cars.



\* Based on \$.10/kWh

# Sustainability

**is an across-the-board initiative.**





Global Care represents OSRAM SYLVANIA's worldwide commitment to environmental sustainability

### Environmentally proactive manufacturing

All of our US and Canadian manufacturing facilities have earned ISO 14001 certification. This ensures consistent compliance with our corporate environmental standards. It also provides accountability by requiring systematic documentation, monitoring, and review of all environmentally relevant data in the development, manufacturing and supply of our lighting products.

At all OSRAM SYLVANIA plants, we are constantly looking for better ways to do things. New processes that minimize the ecological impact of our manufacturing operations. Steps that save energy, cut back on hazardous materials and reduce waste.

Some are simple and obvious, such as powering down computers when not in use and desk-side paper recycling. Others take many years and millions of dollars to implement. Here are just a few examples:

- Elimination of ozone-depleting epoxy, as well as coatings that produced volatile organic compounds.
- Installation of mercury filter system to eliminate over 3,400 gallons of hazardous waste water.
- Monitoring and filtration systems that reduce or eliminate hazardous discharges.
- Energy conservation activities, such as operating lighting and air conditioning on programmable timers, reducing electricity consumption by 15% or more in some plants.
- Recovery processes that improve discharge air and water quality while conserving treatment chemicals.
- Construction of storage facilities for recycled material and hazardous waste to eliminate risks and facilitate recycling processes.



## US and Canadian facilities ISO 14001 certified

### Reducing lead and mercury

Both lead and mercury are heavy metals that bioaccumulate and have an adverse effect on human health. However, lead is widely used in many lighting manufacturing processes, and mercury has long been an essential component of products such as fluorescent lamps and most high intensity discharge (HID) lamps. OSRAM SYLVANIA has been steadily and proactively working to reduce the use of both lead and mercury in our products and in our manufacturing operations. Some specifics:

- We pioneered the use of lead-free solders and welded lamp bases; in fact, many of our plants have eliminated lead soldering operations altogether.
- The Manchester, NH lamp plant eliminated a major lead wave solder operation, a process that consumed several thousand pounds of lead bars and 3,500 pounds of lead waste per year.
- We have eliminated lead solder in the majority of SYLVANIA general purpose incandescent A-19, B-10, BR30, BR40, and globe-shaped lamp products, and most of our halogen lamp types are lead-free.
- We are using lead-free glass in high intensity discharge (HID) light sources and fluorescent tubes.
- We use only recycled mercury in our fluorescent and HID lamps.
- We offer the only lead-free, mercury-free high-pressure sodium lamp on the market, and have won acclaim from the lighting community for this R&D breakthrough.
- We have reduced the mercury content of our top linear fluorescent models by up to 50%.

Since 1990, OSRAM SYLVANIA has joined with others in the lighting industry to reduce mercury content in total U.S. lamp shipments by 67%, and in four-foot fluorescent lamps by an average of 80%\*. And we're continuing to find ways to further lower the mercury content in our fluorescent lamps.

Beginning in 2005, PENTRON® 4-ft T5 products are being manufactured using 40% less mercury. In addition, we have redesigned the manufacturing process for our OCTRON® T8 800 series lamps to reduce their mercury content by 50%, while maintaining their quality and enhancing their performance.

\* Source: National Electrical Manufacturers Association



© OSRAM SYLVANIA / FL Corp

## EPA's National Partnership for Environmental Priorities

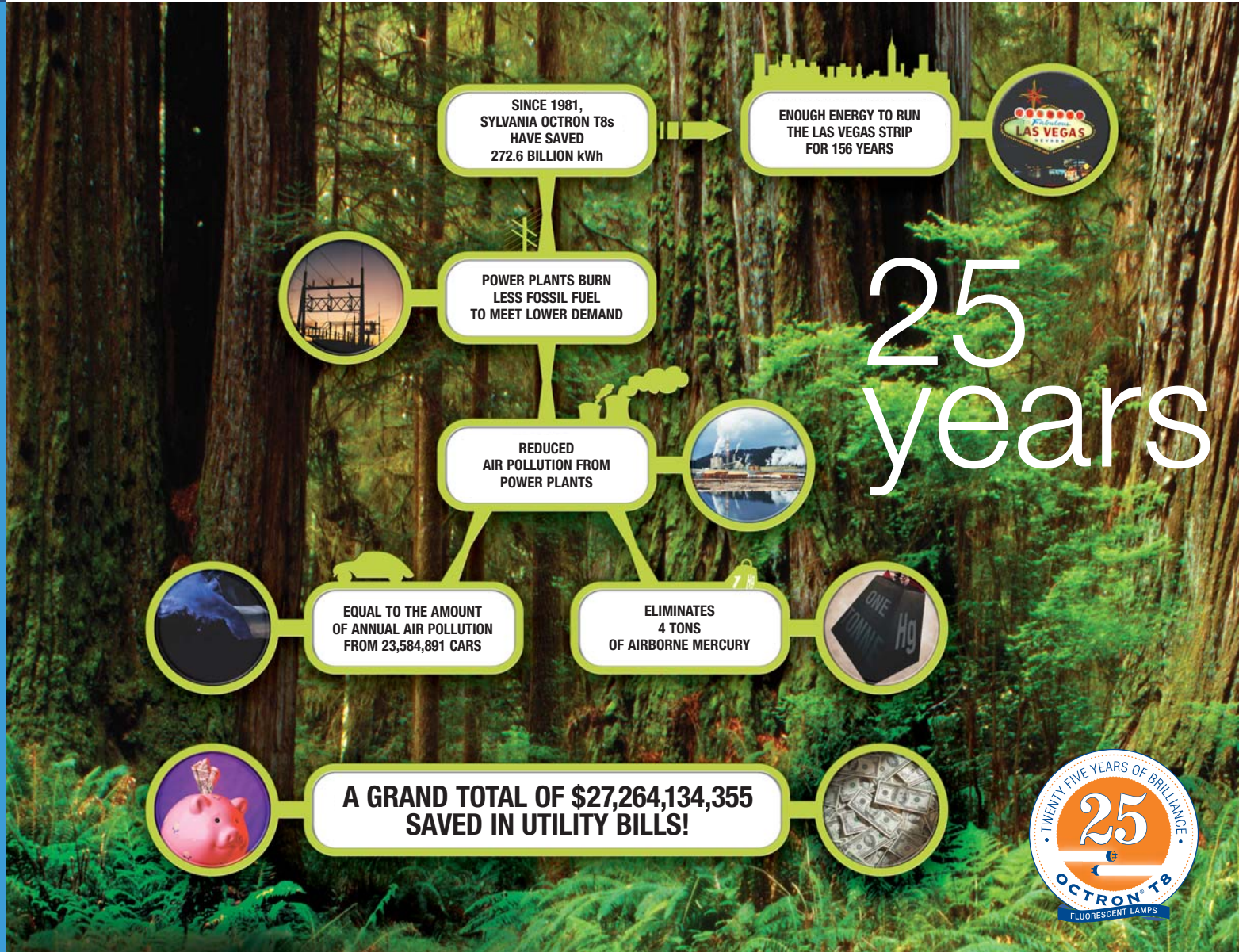
EPA's National Partnership for Environmental Priorities (NPEP) focuses efforts on reducing 31 Priority Chemicals found in our nation's products and wastes. The program aims to eliminate or substantially reduce the use of Priority Chemicals in production. Where they cannot easily be eliminated or reduced at the source, it looks for ways to recover or recycle these chemicals.

This year, OSRAM SYLVANIA's Versailles, Kentucky fluorescent lamp manufacturing facility joined NPEP, committing to significantly reduce the use of mercury in its production of OTRON T8 800-series lamps. For every million lamps produced, over 3/4 of a pound of mercury will be eliminated.



National Partnership for Environmental Priorities

\$27,264,134,355\*  
**Saved** in Utility Bills



\* Energy savings achieved based on conversion from T12 lamps to T8 lamps at \$.10/kWh

# SYLVANIA Lighting Services

## Saved 132,940 gallons of fuel per year

### Energy-efficient products and lighting systems

For our customers, energy-efficient lighting is one of the cornerstones of sustainability. Energy-efficient lighting requires less energy, which lowers electricity demand. With less demand, power plants need to burn less fossil fuel, reducing emissions of mercury and other air pollutants.

The numbers add up—fast. Since we introduced the SYLVANIA OCTRON® family of T8 fluorescent lamps in 1981, we've saved our customers more than \$27 billion in electricity costs. We've avoided 4 tons of airborne mercury discharged from power plants\* and saved enough electricity to run the Las Vegas strip for 156 years!

In addition, SYLVANIA SUPERSAVER® T8 and T12 fluorescent lamps have helped achieve super savings. Since 1999, these lamps have helped our customers cut \$3.5 billion from their utility bills by saving 35 billion kWh. This savings further avoids close to half a ton of airborne mercury from power plants and the equivalent greenhouse gas emissions from 3,020,000 cars.

An important trend in lighting technology is the move toward systems. We started the trend with THE SYSTEM SOLUTION®, a family of optimally balanced energy saving lamps and electronic ballast combinations. By bringing lamp and ballast development under an integrated SYSTEM SOLUTION® concept, we have been able to design innovative SYLVANIA lighting systems that optimize energy savings without sacrificing other elements of performance.

Saving energy is as important to us as a company as it is to our customers. Our IT department sets all computer monitors to enter sleep mode after 25 minutes of inactivity, saving energy when computers are not in use during the day. While much of our office equipment carries the ENERGY STAR® label, we've implemented a purchasing policy to require all applicable office equipment purchases to be ENERGY STAR compliant.

### Reducing waste

SYLVANIA Lighting Services (SLS) operates approximately 490 service vehicles in various regions nationwide. In April, 2005, SLS set a 65 mph speed limit for the fleet. While the primary motivation for this policy was safety, it has also saved more than 24,600 gallons of fuel per year—a reduction of 538,500 pounds of carbon dioxide (CO<sub>2</sub>) annually, as well as 298 pounds of particulate matter (PM) and 9,800 pounds of nitrogen oxide (NO<sub>x</sub>)\*.

SLS also implemented a no-idling policy, requiring vehicles not in service or traffic to idle for no longer than five minutes. This policy is projected to save 108,340 gallons of fuel per year, with annual air pollution reductions of 2.3 million pounds of CO<sub>2</sub>, 1,300 pounds of particulate matter and 42,670 pounds of NO<sub>x</sub>.

As SLS updates its fleet this year, all replacement vehicles with 6 liter diesel engines (approximately half the fleet) will be equipped with a diesel oxidation catalyst, reducing PM by a further 20%, or 1,032 pounds per year.

At the plants, processes have been implemented to decrease alcohol and solvent use, remove underground storage tanks, add filtration systems for factory discharge air purification and improve water treatment by reducing the quantities of chemicals needed to treat. The Versailles plant has also installed a solvent recovery system to avert solvents from the discharge stream.

Another one of our facilities constructed a new hazardous waste storage building. The new building has sufficient room to safely accumulate waste for direct shipping and to eliminate moving the waste throughout the facility, thus reducing material handling and potential spills that could cause environmental damage.

The Versailles, KY fluorescent lamp manufacturing facility's production units have been designed to use water-based phosphor coating, resulting in a 90% reduction in certain emissions over the past 10 years.

In Central Falls, Rhode Island, glass plant chemical solutions from the glass frosting process are reused. In addition, the plant annually reuses more than 60 thousand tons of cullet—scrap glass from the glass furnace.



\* U.S. Department of Energy emissions conversion calculations

\*\* U.S. EPA Office of Transportation and Air Quality (OTAQ) emissions conversion calculations



## St. Marys Plant Institutes Major Recycling Program

About 2 million incandescent lamps are manufactured daily at OSRAM SYLVANIA's St. Marys, Pennsylvania facility. As with any manufacturing plant, the amount of waste produced through product production and human consumption was enormous. Sending waste to a local landfill was costly and did not meet the company's environmental responsibility policy.

A St. Marys' task team applied PQI process assessment to the waste production and disposal processes and searched for ways to reduce waste, thus reducing disposal costs and waste from landfills.

They partnered with recycling company JaSar to process the facility's bottles, cans, aluminum scrap, paper and cardboard. A full-time JaSar employee stays onsite to manage the program. This partnership has improved the flow of recycling within the plant by about 70%. The rising price for recyclable materials also makes the relationship potentially profitable for OSRAM SYLVANIA.

Boxes and shipping barrels are now reused. Used glass, the #1 residual waste, is sent to the company's York, PA plant to make lamp bases or to the Versailles, Kentucky glass plant to be melted and reused. Challenging at first, the environmental and financial payoff has made the project a success.

40% less  
plastic in  
packaging



## Improved packaging led to an annual air pollution reduction of 900,000 pounds of CO<sub>2</sub>

The Winchester, KY facility has installed an oil filtration system on manufacturing equipment, resulting in a reduction of over 1,500 gallons of oil per year.

On the transaction side of our business, our customers place over 80% of their SYLVANIA lamp and ballast orders through our electronic and web-based ordering systems, significantly reducing the use of paper and ink.

In addition, we have utilized a server-based fax solution at our headquarters facility, allowing employees to send and receive faxes with their computers. Not only does this save paper, we were also able to eliminate the need for 75% of our fax machines. Most of our printers are capable of printing on both sides of a sheet of paper, and all employees have received a tutorial about this helpful "duplexing" feature that can significantly reduce the amount of paper we use.

### Optimized packaging and transportation

Beginning in 2005, our DULUX® lamps are packaged with 40% less plastic. This environmental achievement goes beyond the use of fewer raw materials, and extends to the entire supply chain. By fitting more lamp packages on a pallet, OSRAM SYLVANIA was able to reduce trucking requirements, saving about 10,350 gallons of diesel fuel per year and avoiding 229,770 pounds of carbon dioxide emissions, 155 pounds of PM and 5,090 pounds of NO<sub>x</sub> annually.\*

It's all part of an aggressive sustainability strategy. Through advanced computer software and scientific methods, we've optimized packaging systems from primary through secondary to unit load, saving packaging materials, pallets, fuel, transportation, and warehouse space, without compromising shipping performance.

The materials used in packaging our HID lamps have recently been downsized, thereby eliminating over 100 truckloads annually. This saves the company over 30,000 gallons of diesel fuel and a further 670,145 pounds of carbon dioxide, 14,860 pounds of NO<sub>x</sub> and 1,037 pounds of PM each year.\*

Other improvements include the elimination of inner nickel shells and lead solder for various discharge lamp types.

\* U.S. EPA OTAQ emissions conversion calculations

## In 2004 alone, SYLVANIA Lighting Services recycled over 8.5 million mercury-containing lamps

### Recycling on all fronts

Each of our worldwide manufacturing locations has established recycling efforts for items such as paper, cardboard, scrap, glass and brass bases. Recycling projects include up to 90% of scrap materials generated at manufacturing, including plastic, trays, metal, and cardboard. In addition, 95% of SYLVANIA packaging comes from renewable resources, and 90% of high volume packaging is made from post-consumer or post-industrial recycled materials. Virtually all of our lamp packaging is recyclable.

The Versailles lamp plant in Kentucky reuses production chemicals that are used as a transfer medium for phosphor powder, that coats the inside of the bulb. In just one year, the plant recycled close to 1 million pounds of chemicals.

In Winchester, Kentucky, the brass bases that can be removed safely from defective lamps are recovered. Approximately 36 thousand pounds of brass bases are recycled at the Winchester plant each year.

We play an active role in EPA-backed programs to keep used mercury-containing lamps out of the environment, and encourage distributors and retailers of our SYLVANIA products to offer lamp-recycling programs to their customers. As a matter of policy, our own warehouse and manufacturing locations recycle broken lamps. OSRAM SYLVANIA also publicly promotes recycling as the preferred method of lamp disposal.

When our own SYLVANIA Lighting Services personnel complete lighting retrofits or maintenance calls, we ship all spent mercury-containing lamps to a certified lamp recycler for processing. In 2004 alone, SLS recycled over 8.5 million mercury-containing lamps, avoiding over 112 pounds of mercury from being deposited in landfills.

We were instrumental in assisting the Association of Mercury and Lamp Recyclers, the National Electrical Manufacturers Association and the Solid Waste Association of North America develop outreach materials to increase the lamp-recycling rate in the US.

Lamp recycling has increased from less than 10 million lamps in 1990, to 70 million lamps in 1997, to 156 million lamps in 2003. OSRAM SYLVANIA is committed to helping increase the lamp-recycling rate in the US.

Recycling extends to our products, as well. Case in point, we use only recycled mercury in our fluorescent and HID lamps.



### ECOLOGIC® Products - a Family of Sustainable Lighting Solutions

ECOLOGIC® is an innovative program of environmental responsibility, a comprehensive approach to reducing the environmental impact of our processes, packaging and products. Today, we offer over 800 ECOLOGIC products—more than any other manufacturer.

Available in the incandescent, halogen, fluorescent and high-intensity discharge (HID) product lines, all SYLVANIA ECOLOGIC-labeled products are engineered to pass the Federal TCLP test for hazardous waste determination. In addition, ECO products feature some or all of the following characteristics:

- Performance equal to or better than standard, non-ECO products
- Reduction or elimination of toxic materials
- Lamp bases using lead-free solders, or lead-free welded lamp bases
- Precision dosing systems ensuring consistent low mercury content
- Lead-free glass in HID products
- Packaging using recycled materials and soy-based inks
- High efficacy
- Long life performance



A young girl with dark, curly hair is lying in a field of tall, green grass. She is looking off to the side with a thoughtful expression, her hands clasped under her chin. The background is a soft-focus field of grass.

Our products all go well with

**green.**



## Greener buildings

Today's ecologically conscious building and design movement recognizes that lighting can play a leading role in reducing energy use, improving work conditions and reducing environmental impacts. The numbers speak for themselves: In the United States, buildings account for 65% of the total electricity consumption and 30% of the associated greenhouse gas emissions from power plants.

State and local governments, colleges and universities, corporations, and even the Federal government are creating "green building" policies that require review and consideration of sustainable design, construction, and decommissioning processes before any project, new or retrofit, is undertaken.

Green building has a number of sustainability objectives, including:

- Improving energy performance
- Reducing energy and water consumption
- Increasing the use of local and/or recycled materials
- Enhancing indoor air quality
- Promoting "smart growth" strategies
- Maximizing economic performance of these buildings

To achieve the sustainability goals of green building, a number of whole building rating systems have evolved, including ENERGY STAR® Buildings, Green Globes, E-Benchmarking, and Leadership in Energy & Environmental Design (LEED®).



## Stewart's Building Case Study

Nearly empty and forgotten, the Stewart's Building is now LEED® Certified and a cornerstone in the rebirth of Baltimore's inner city. To help with the transformation, the project's lighting design firm called on the expertise of OSRAM SYLVANIA Commercial Engineers and SYLVANIA lighting products to add brilliant light to the renovation project so that future tenants would feel comfortable and safe.

Aesthetics were a primary concern when developing the lighting scheme. Exterior fixtures were chosen for their minimal intrusion on the decorative façade. Lobby lighting fixtures were concealed where possible. Energy consumption and conservation were critical. To extend lamp life and minimize energy consumption, a dimming system with presets that coincided with specific hours of the day was specified. For the lamps, SYLVANIA IR lamp technology was employed to maximize lamp performance and extend lamp life. The end result was decreased energy consumption and longer lamp life.

After a comprehensive review, the Stewart's Building project received Leadership in Energy & Environmental Design (LEED) Certification from the United States Green Building Council (USGBC) for the building and design team's commitment to sustainable design. More importantly, a historic Baltimore landmark has come back to light.

## U.S. Green Building Council and LEED®

The mission of the U.S. Green Building Council (USGBC) is to “promote buildings that are environmentally responsible, profitable and healthy places to live and work.” Founded in 1993 as a non-profit coalition representing the entire building industry, it has grown to include more than 5,500 members, including architects, engineers, interior designers, product manufacturers like OSRAM SYLVANIA, contractors, utilities, government agencies, and professional societies.

One of the major initiatives of the USGBC is its Leadership in Energy and Environmental Design (LEED®) program, which was created to establish a common standard of measurement for “green buildings”, promoting integrated, whole-building design practices, and recognizing environmental leadership in the building industry.

LEED emphasizes sustainable site development, water savings, energy efficiency, materials selection and indoor environmental quality. LEED rating systems help guide the sustainable design and building process of new construction (LEED-NC), renovations of commercial interiors (LEED-CI) and renovations and operations of existing buildings (LEED-EB). Each rating system contains certain prerequisites that must be met, and points are awarded for incorporating various environmental criteria. A minimum number of points are required for certification as a LEED building.

Lighting plays an important role in LEED certification, and SYLVANIA’s innovative energy-efficient and long-life products and systems help substantially exceed the energy performance requirements for each of the LEED rating systems—or any other green building rating system. The following chart offers some examples.



Lighting Type	Potential Energy Savings*
<b>HID</b>	
Upgrade from a magnetic HID ballast to a QUICKTRONIC® electronic HID ballast	Up to 15%
Use METALARC® pulse start (or ceramic metal halide) instead of probe start lamps	Up to 36%
Substitute LUMALUX® high pressure sodium lamps with whiter light sources (CF/MH) if energy savings is achieved and IES levels are met	Varies
Substitute with PENTRON® HO T5 or OCTRON® T8 for hi-bay installations, making use of QUICKTRONIC T5HO electronic ballasts that have lamp switching capability and use occupancy sensors	~50%
<b>Fluorescent</b>	
Retrofit magnetically ballasted T12 fixtures with QUICKTRONIC electronic ballasts and OCTRON T8 lamps	Up to 30-45%
Upgrade from electronically ballasted OCTRON 700 series T8s to electronically ballasted OCTRON F030 or F028 SUPERSAVER® T8s	Up to 12%
Upgrade from standard IS electronic ballasts to QUICKTRONIC QHE (High Efficiency) IS electronic ballasts	Up to 6%
Use QUICKTRONIC IS T8 Low Ballast Factor (BF) ballasts to replace normal BF electronic ballasts	Up to 12%
Where feasible, higher BF (e.g., 1.2 BF) electronic ballasts with high lumen lamps (e.g., OCTRON F032W XP) can reduce number of lamps needed	E.g., use 2 vs. 3 T8 lamps for 10% energy savings
Substitute with PENTRON HO T5 or OCTRON T8 for hi-bay installations, taking advantage of electronic ballasts with lamp switching capability and suitable occupancy sensors	Varies
Upgrade from 3L electronically ballasted parabolic fixtures, (87W) to 2L Lithonia RT5® Volumetric Recessed fixtures (60/58W)	33% additional energy savings
<b>Incandescent and Halogen</b>	
Convert all standard incandescent lamps to CAPSYLITE® Halogen or DULUX® Compact Fluorescent Lamps (CFLs)	Up to 75%

\* Individual results may vary

To help contractors achieve the “Controllability of Lighting” point, SYLVANIA manufactures several ballasts that provide superb compatibility with lighting system controls and reliability in a system design. These include PROStart® ballasts, and QUICKTRONIC® POWERSENSE™ T8 Dimming ballasts and DALI® ballasts that are compatible with occupancy sensors. Additionally, the QUICKTRONIC POWERSENSE T8 Dimming and DALI dimming ballasts can be integrated with Daylight Harvesting and Building Management Systems for higher levels of control and comfort.



### A prerequisite in LEED® for Existing Buildings

LEED-EB is applicable to building operations, processes, system upgrades, and minor space use changes, as well as buildings that have already achieved LEED-NC status and have reached the point of recertification.

Using a whole-building approach that includes both interior and exterior lamps, LEED-EB has a prerequisite that all mercury-containing lamps (linear fluorescent, compact fluorescent, and HID) must achieve a total maximum mercury level of 100 picograms per lumen hour, calculated on a weighted average based on lumen output, lamp life, and mercury content.

SYLVANIA offers a wide range of low-mercury, long-life, high-performance lamps—including the industry’s only mercury-free high-pressure sodium lamp. Our PENTRON® T5 and OCTRON® 800 series T8 lamps, including 800, 800XP, and 800XPS, have been redesigned to contain 40-50% less mercury and will help achieve this standard.



### IHM Motherhouse and Healthcare Center

In the fall of 2000, the Immaculate Heart of Mary (IHM) sisters began a major renovation to the 70-year-old Motherhouse and Healthcare Center in Monroe, Michigan. Maintaining the historical significance and aesthetic integrity of the facility’s lighting design, while moving to a more energy-efficient installation, was a primary concern in this project. The Motherhouse is now awaiting the Leadership in Energy and Environmental Design (LEED), EB (Existing Building) certification.

High-efficiency SYLVANIA DULUX, compact fluorescent lamps were installed throughout the facility to supplement the natural light. The lighting system’s operating cycles are controlled through programmed daylight sensors. In combination with the facility’s other LEED prescribed system upgrades, these innovative lighting products help keep energy costs and waste production low. Incorporating sound lighting practices, including the use of energy-efficient lighting systems into building and renovation projects, earns points toward LEED certification.

An underwater photograph of two children, a girl and a boy, holding hands and smiling. The girl is on the left, wearing a pink swimsuit. The boy is on the right, wearing striped swim trunks. They are surrounded by bubbles and sunlight filtering through the water. The text "Sustainability is a team effort." is overlaid on the image.

Sustainability is a  
team effort.

When it comes to creating a sustainable future, we're all in it together. No company can go it alone, and at OSRAM SYLVANIA our commitment to energy efficiency and the environment includes active participation in programs, organizations, and standards-setting groups who share our goals and values.

We're proud of our sustainability partnerships, some of which include:

**Alliance to Save Energy** [www.ase.org](http://www.ase.org)

**American National Standards Institute (ANSI)** [www.ansi.org](http://www.ansi.org)

**International Dark-Sky Association (IDA)** [www.darksky.org](http://www.darksky.org)

**Illuminating Engineering Society of North America (IESNA)** [www.iesna.org](http://www.iesna.org)

**International Organization for Standardization (ISO)** [www.iso.org](http://www.iso.org)

**Lighting Research Center (LRC)** [www.lrc.rpi.edu](http://www.lrc.rpi.edu)

**Lighting Research Office (LRO)** [www.lightingresearchoffice.org](http://www.lightingresearchoffice.org)

**National Electrical Manufacturers Association (NEMA)** [www.nema.org](http://www.nema.org)

**National Lighting Bureau** [www.nlb.org](http://www.nlb.org)

**TFM Green Buildings Advisory Group** [www.facilitycity.com/tfm](http://www.facilitycity.com/tfm)

**United States EPA & DOE Energy Star® Program** [www.energystar.gov](http://www.energystar.gov)

**United States Green Building Council (USGBC)** [www.usgbc.org](http://www.usgbc.org)

### Alliance to Save Energy (ASE)

The Alliance to Save Energy is a nonprofit coalition promoting energy efficiency worldwide to achieve a healthier economy, a cleaner environment, and greater energy security. OSRAM SYLVANIA is a founding associate and member of the alliance since its inception. Presently, Senior Vice President Geoffrey Hunt sits on the Board of Directors.

### International Dark-Sky Association

The International Dark-Sky Association's mission is to "preserve and protect the nighttime environment and our heritage of dark skies through quality outdoor lighting." OSRAM SYLVANIA is a lifetime member of the IDA.

### Illuminating Engineering Society of North America (IESNA)



The Energy and Environmental Design Award of Excellence, sponsored by OSRAM SYLVANIA, recognizes quality lighting installations in commercial and industrial buildings that incorporate advanced energy-saving strategies and environmentally responsible solutions into the overall design.

National and international members of the IESNA submit projects to a panel of judges for sectional, regional and international review and recognition. Awards are given to projects that address design complexity, employ unique lighting design, and incorporate energy efficient strategies and key elements of sustainability.



We're proud to be  
**ENERGY STAR®**  
Partner of the Year. Again.

ENERGY STAR is a government-backed program that helps businesses and individuals save money and protect the environment through superior energy efficiency.

For the third year in a row, OSRAM SYLVANIA is proud to have been selected as the ENERGY STAR Partner of the Year in recognition of our energy-efficient lighting. We offer more than 20 different compact fluorescent products bearing the ENERGY STAR label, including our new Daylight Extra® series.



PARTNER OF THE YEAR 2005





## About OSRAM SYLVANIA

OSRAM SYLVANIA is the North American lighting operation of OSRAM GmbH, one of the world's largest and best-recognized lighting manufacturers. Serving customers in more than 40 countries, we manufacture and market a wide range of lighting products and precision materials and components under the SYLVANIA and OSRAM brand names. OSRAM SYLVANIA also offers complete, energy-conscious lighting systems, as well as expert installation and maintenance services.

## General Lighting Division

OSRAM SYLVANIA's General Lighting Division manufactures incandescent, halogen, fluorescent and high-intensity discharge lamps at seven plants in the United States, Canada and Mexico. It provides general and specialty lighting sales, marketing and distribution services throughout the U.S. to industrial, commercial and retail customers. SYLVANIA Lighting Services provides preventative maintenance and energy management programs for indoor and outdoor lighting systems in stores, office buildings, warehouses, factories and other locations.

## Sustainability saves more than money.

We can show you how. For more information about OSRAM SYLVANIA's commitment to environmental sustainability, or about any of our energy-saving and environmentally preferable lighting solutions, please visit our Energy and Environment web page at [www.sylvania.com/AboutUs/EnergyAndEnvironment](http://www.sylvania.com/AboutUs/EnergyAndEnvironment)

OSRAM SYLVANIA  
National Customer  
Support Sales  
18725 N. Union Street  
Westfield, IN 46074

### Industrial & Commercial

Phone: 1-800-255-5042  
Fax: 1-800-255-5043

### Consumer Products

Phone: 1-800-842-7010  
Fax: 1-800-842-7011

ENV05R1

SYLVANIA is a registered trademark of OSRAM SYLVANIA Inc.

CAPSYLITE, DULUX, ECOLOGIC, The ECOLOGIC Tree logo, LUMALUX, METALARC, OCTRON, PENTRON, SUPERSAVER and THE SYSTEM SOLUTION are registered trademarks of OSRAM SYLVANIA Inc.

QUICKTRONIC is a registered trademark of OSRAM GmbH, used under license.

All other trademarks and logos are the property of their respective owners.



Printed on recycled paper 100% post-consumer content. 3/05

© 2006 OSRAM SYLVANIA